



Co-funded by the  
Erasmus+ Programme  
of the European Union



# **Erasmus+ project “Improvement of master level education in the field of physical sciences in Belarusian universities” – Acronym “Physics”**

561525-EPP-1-2015-1-LV-EPPKA2-CBHE-JP – ERASMUS+  
CBHE

Teachers training event

Riga Technical University 12/1, Azenes Street Riga, Latvia  
February 5<sup>th</sup> – 9<sup>th</sup>, 2018



Co-funded by the  
Erasmus+ Programme  
of the European Union



Schedule		Activity	Responsible contact
Monday February 5 <sup>th</sup> 9.00 – 12.00, off.	Āz. 12/1 - 319	Overview schedule + main goals of mobility program.  Innovation Management Visit to RTU laboratories	Dr. A.Zabasta,  Prof. A.Žiravecka, Doc. I.Buņina. Chief Lab. A.Avotiņš
Monday February 5 <sup>th</sup> 13.00 – 16.00, off.	Āz. 12/1 - 521	Dizaina Fabrika	
Tuesday, February 6 <sup>th</sup> 13.00 – 12.00, off.	Āz. 12/1 – 319	Active use of a digital learning environment: <ul style="list-style-type: none"><li>a general explanation concerning electronic learning</li><li>an explanation on Blackboard and Moodle</li></ul>	Prof. Ioan Peuteman
Tuesday, February 6 <sup>th</sup> 13.00 – 16.00, off.	12:30 – 14:30 Āz. 12/1 – 522  14:30 – 16:30: Āz. 12/1 - 314	Active use of a digital learning environment: <ul style="list-style-type: none"><li>the course on 'applied physics' as an example</li><li>a hands-on part where the participants make their own course (with non-technical staff)</li></ul>	Prof. Ioan Peuteman
Wednesday February 7 <sup>th</sup> 9.00 – 12.00, off.	Cesis campus	Visit to renewables laboratory, which is allocated in RTU filial in Cesis campus.	A.Žiravecka,
Wednesday February 7 <sup>th</sup> 13.00 – 16.00, off.	Cesis campus	Visit to renewables laboratory, which is allocated in RTU filial in Cesis campus.	A.Žiravecka,
Thursday February 8 <sup>th</sup> 9.00 – 12.00, off.	Āz. 12/1 – 319.	Гранулярные нанокompозиты металл-полупроводник-диэлектрик  Магнетизм наноструктурированных композитов и многослойных материалов	Федотов А.К., БГУ. Касюк Ю.В., Федотова Ю.А. НИИ ядерных проблем БГУ (эксперты РАНИ).



Co-funded by the  
Erasmus+ Programme  
of the European Union



Thursday February 8th 13.00 – 16.00, off.	Āz. 12/1 – 319	Динамическая голография и ее применения  РАНИ: Современное состояние дел в области нанотехнологий в Республике Беларусь»  Научные исследования и подготовка специалистов в области нанотехнологий и наноматериалов в Белорусском государственном университете информатики и радиоэлектроники	Толстик А.Л., БГУ.  Труханов А.В. Республиканская ассоциация нанодустрии (исполнительный директор РАНИ)  Борисенко В.Е., Белорусский государственный университет информатики и радиоэлектроники (эксперт РАНИ)
Friday February 9th 9.00 – 12.00, off.	Āz. 12/1 – 319	Основы нанопотоники  Технологии формирования нанокпозиционных покрытий  Применение функциональных наноматериалов в полимерных композициях	Стрекаль Н.Д., Гродненский государственный университет.  Купо А.Н., Гомельский государственный университет.  Белорусский государственный технологический университет.
Friday February 9 <sup>th</sup> 13.00 – 16.00, off.	Āz. 12/1 – 319	Round table	BSU, RANI, RTU



Co-funded by the  
Erasmus+ Programme  
of the European Union



## Information about local organizer

The training will be hosted by the Institute of Industrial Electronics and Electrical Engineering, Faculty of Power and Electrical Engineering of Riga Technical University ([www.rtu.lv](http://www.rtu.lv)) that is the largest public university in Latvia.

The training will be held in the building of the [Faculty of Power and Electrical Engineering](#) of [Riga Technical University](#): Latvia, Riga, Azenes str. 12, building 1

### The local organizing committee:

Project coordinator, Dr.sc.ing. Anatolijs  
Zabashita  
GSM: +371 29232872  
[Anatolijs.Zabasta@rtu.lv](mailto:Anatolijs.Zabasta@rtu.lv)

Professor, Dr.sc.ing. Nadezhda Kunicina  
GSM: +371 26162662  
[Nadezda.Kunicina@rtu.lv](mailto:Nadezda.Kunicina@rtu.lv)

Professor Dr.sc.ing. Anastasija Žiravecka  
GSM: +371 29682242  
[Anastasija.Ziravecka@rtu.lv](mailto:Anastasija.Ziravecka@rtu.lv)

Docent, Dr.sc.ing. Inna Bunina  
Phone: +371 .....  
[Inna.bunina@rtu.lv](mailto:Inna.bunina@rtu.lv)



## Transportation & Hotels

The airport in Latvia is **Riga airport**: <http://www.riga-airport.com/>

The national air company is **Air Baltic** <http://www.airbaltic.lv>

### **Transport from/to airport:**



Co-funded by the  
Erasmus+ Programme  
of the European Union



Bus No. 22 (if you choose this transport you have to change to bus 53 on one of 3 bus stops RMR; Pastu or Melnsila iela) you have to buy ticket in Narvesen kiosks 2<sup>nd</sup> floor of terminal departures hall, or in the bus from driver directly



You have to leave bus Nr 53 on stop Preses nams.

**Riga public transport** (bus, trolleybus, and tram) operates an electronic payment system, or e-ticket (e-talons). Every time, when entering a public transport vehicle, a passenger has to apply his/her e-ticket to the validator until the ticket's validity period and the number of remaining trips are displayed on the validator screen, the green signal lights up and a short signal sounds. Validators are located inside public transport vehicles, next to every door. In case of having no e-ticket, a passenger has to buy one-time ticket from the vehicle's driver.

In Riga public transport (except bus No. 22), you have also to pay for carrying luggage with the total of sizes (length, height and width) exceeding 200 cm. Luggage tickets are available from the vehicle driver.

You can buy e-tickets at press kiosks "Narvesen" public transport terminals, special ticket vending machines, customer service centres and other trade outlets marked as selling e-tickets.  
[www.rigassatiksm.lv](http://www.rigassatiksm.lv)

To reach venue place (or hotel Islande, please use Baltic shuttle bus or taxi)

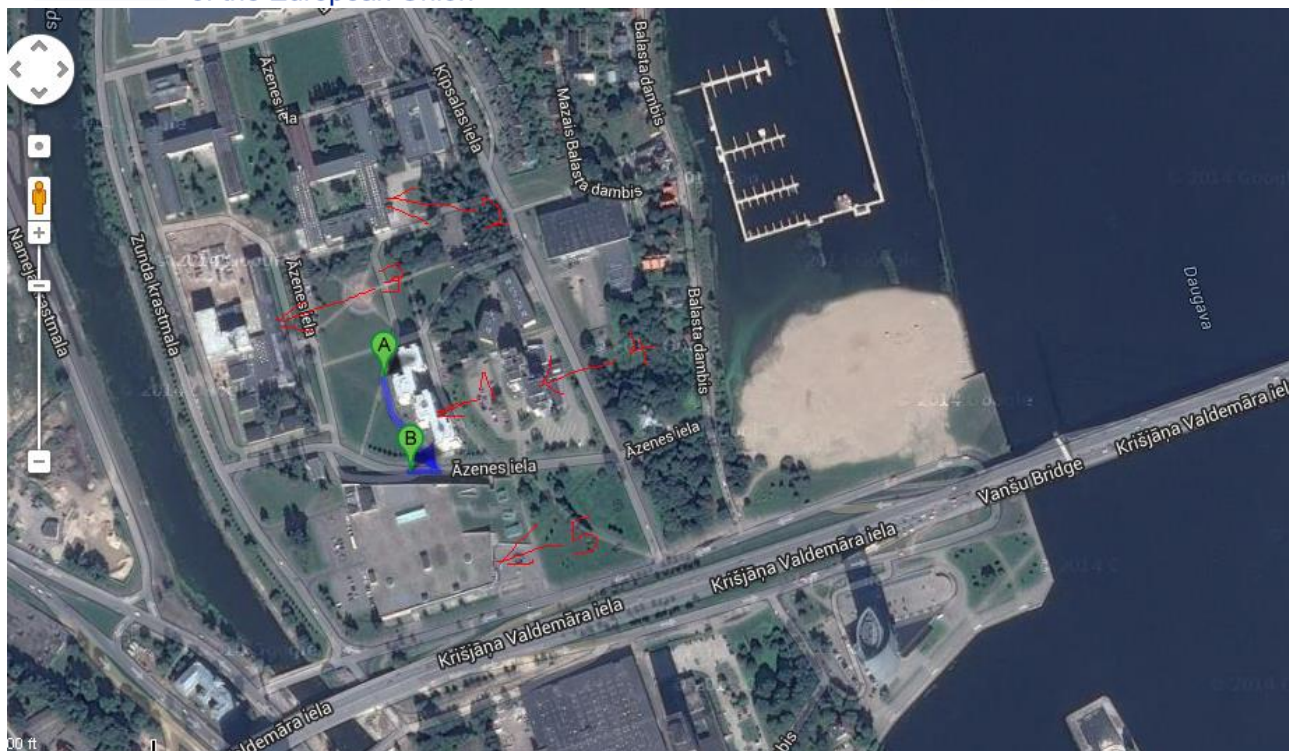
<http://saraksti.rigassatiksm.lv/index.html#bus/22/b-a/en>

Directions you have to tell taxi driver – direction "KIPSALA"

1. RTU Hostel- 6 Azenes Str., Riga phone +371 67089268; +371 26435882
3. RTU Faculty of Power and Electrical Engineering and, Azenes str. 12, building 1
4. Islande hotel; [www.islandehotel.lv](http://www.islandehotel.lv)



Co-funded by the  
Erasmus+ Programme  
of the European Union



## Food

A student canteen is allocated at the 1<sup>st</sup> floor of the Faculty of Power and Electrical Engineering, Āzenes str. 12/1. Its working time 8.00 – 17.30. The canteen offers complex lunch with the price 2.80 and 3.00 euro per person.

Another option is the shopping centre Olimpia across the street, where you can find a lot of café at the 2<sup>nd</sup> floor.

We will arrange coffee-breaks through all the week, excepted Wednesday.